



FASTechnologies, Corp.

your drill & rout technology experts

NC-CAM DRILL

Your power system for CNC drill programming...

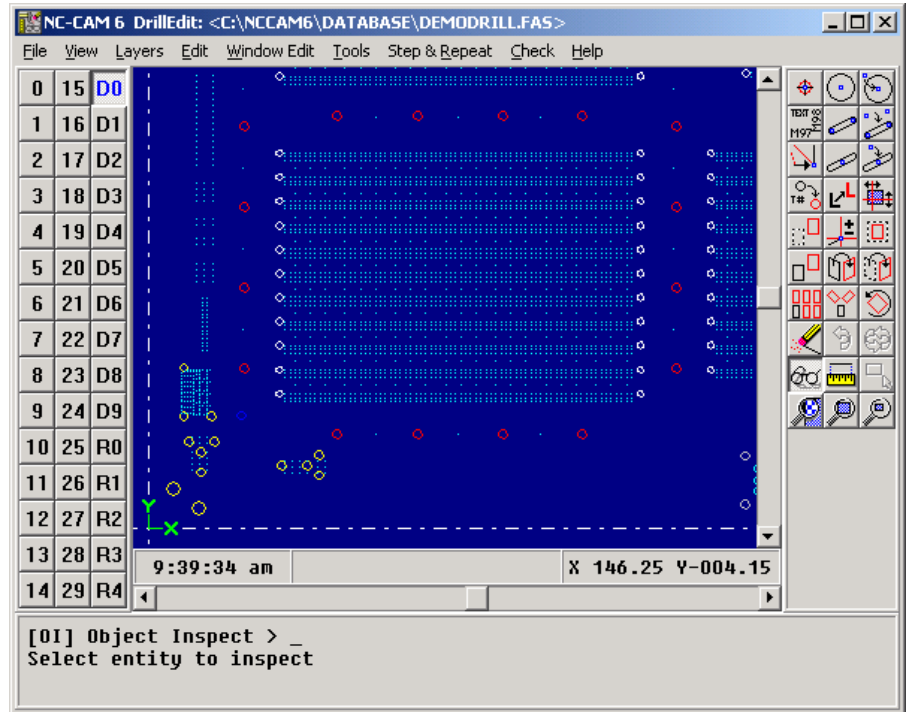
NC-CAM DRILL improves drilling productivity by crafting productive, trouble-free drill programs. With its unparalleled OptiScan! path optimizer, automatic tooling pin avoidance, and clever multi-tool slots, NC-CAM delivers the latest ideas and techniques in drilling. Clean interfaces to Valor Genesis, IGI PAR/CAM, and CAM-350 artwork CAM systems provide a direct path from your artwork CAM through NC-CAM Drill and on to your production floor.

production advantages

- Clever multi-tool piloting makes slot drilling fast and clean, w/o slot tools
- New chip-breaking technique takes the "hook" out of short slots
- OptiScan! path optimizer delivers extremely tight drill paths
- Automatic tooling pin avoidance can increase throughput 10-20% on many drilling machines
- Spacing check eliminates double-hits and near-misses
- ESI-5100 laser driller support handles holes below 10 microns
- Automatic diameter-check coupons speed drilling verification

CAM compatibility

- Valor ODB++ compatibility assures clean integration with Genesis CAM
- IGI-POST compatibility assures clean integration with ICE/PAR/SERICAM
- IPC-D-350 compatibility provides a clean integration with CAM-350
- RS-274X, HPGL, DXF, Excellon input work with almost any CAD program



NC-CAM Drill creates highly productive drill programs. In continuous development since 1988, NC-CAM is used today at over 600 sites worldwide. It is easily the most widely-used drill program engineering system in the world.

Path optimization reduces the net distance traveled by the drilling machine, hence reducing net cycle time. First introduced in 1992, the OptiScan! path optimizer has been enhanced annually. It is consistently the world's strongest path-reducing optimizer, bar none.

New for 1998 is an additional time-saver, namely automatic tooling pin avoidance. With this algorithm, the output drill programs are sequenced to positively avoid traversing drill heads over tooling pins. This allows drill head travel limits to be reduced, dramatically increasing drilling throughput.

Also newly-released, NC-CAM slots are machined utilizing multiple drill diameters to relieve deflection and reduce flute loads. These unique algorithms straighten slots, increase speed, and minimize breakage, even with standard drill bits.

All in all, drilling machines produce more when they're running programs created with NC-CAM Drill.

Smart drilling and routing from FASTechnologies